



Westerville Quilt Guild

NEWS

Volume 11, No 7 — July 2015



July 28, 2015

**Jeff Bretthauer, Marcey Arter, & Janice Baer,
Presidents-of-the-Month
Annual Guild Picnic
Meeting will start at 6:30**



The Presidents for July Meeting would like to invite you to their ORPHAN BLOCK Picnic. If you have any orphan blocks that you could not use but saved them to use later, please bring them and give a (short) story about your block. If you have made something from your orphans please share. We will also have show and tell.



We will be serving Pork BBQ sandwiches. Water will be provided along with paper products. Everyone should bring a side dish (for 6-8 people) to share:

A-L - Please bring a Dessert or Appetizer

M-Z - Please bring a Salad or Side Dish



Yes, the Holiday Meeting President of the Month Team knows that it is just July! But, at the December 1 holiday meeting, we want to display some Westerville Quilt Guild member made holiday/winter theme quilts. They can be snow people, snowflakes, Christmas, Hanukkah, Kwanzaa, skaters/skiers/snowboarders; brand new or old; big or small. So, if a holiday or winter quilt is on your bucket list or is nearly finished, hop to it and show us your finished work!



SOCIAL TIME - Meet and Greet - Arrive Early When You Can...

Start gathering around 6:30. Greet friends & MEET new members. **Members:** This month make sure you find someone you would like to know better, a new member or guest, and introduce yourself. **New Members/Guests:** If you are a new member/guest, approach someone you don't know and introduce yourself. Learn a little about the other person and share a bit about yourself! We are a friendly bunch!

We meet on the 4th Tuesday of each month, 6:30 pm Social Time, 7:00 p.m. Meeting, at The Westerville American Legion Hall, 393 East College Avenue, Westerville, OH 43081, Web Site: <http://www.WestervilleQuiltGuild.com>, E-mail: info@westervillequiltguild.com



Tickets for the "Born in the USA" Raffle Basket will be on sale at the beginning of the meeting and during the meeting. The drawing will be at the end of the meeting. Tickets are \$1 or 6 for \$5.

2015 Program Sneak Peek



Service Committee

We donated 95 pillowcases in June. Big thanks... to Donna Pierson who brought in 42 pillowcases. She claimed she was doing inventory reduction..... I challenge anyone to beat that contribution. Wow..... Keep 'em, coming.

22 fidgets were also turned in to the Columbus Alzheimer's Association. Aggie will still take more fidget quilts as people would like to make them. Check the web site for directions.



Another fidget quilt is making a big difference. Aggie Peterson's daughter gave one to a co-worker's Mom...and received this email in response.

From: "Annie Kerregan"
To: "Wendy Bradshaw"
Subject: Thank you!

Wendy,

I can't tell you thank you enough! Mom loves her gift and couldn't stop talking about it.

- Annie

August 25

Ruthie Hoover & Christina Sidebottom, Presidents-of-the-Month

Becky Odom, History Curator from the Ohio History Connection. She will be bringing 6-10 historic quilts ranging in ages from 1850 to 1965. She will be including a variety of others from 1815 to 1985 in a PowerPoint presentation.

Fat Quarter Raffle

Don't forget to bring your Fat Quarters if you want to participate in this month's Raffle drawing! This month's theme is Patriotic colors, of course! Limit 5 FQ's, please!

Home of the Brave News

Janet Alderman has received the names of 10 families from Susan who spoke to our group last July. I will keep the membership posted as the comfort quilts find a home.

Bus Trip - July 30, 2015

Meet at 8:00 AM next Thursday to board the bus at Westerville (Shrock & State) Walmart.





Taking the Mystery Out of Quilt Guild Dues

As part of their fiscal analysis, the WQG Executive Committee has been looking at quilt guild membership dues. The following factors influence annual dues:

1. Operational expenses; i.e. rent and website
2. Programs and services; i.e. speakers, charities, food, and events
3. Income beyond dues; i.e. raffle quilts or baskets, quilt shows, workshops, and trips
4. Membership; i.e. number of members, honorary members, discounted memberships
5. Philosophy regarding income and account balances

So what was found? Internet sources of eleven quilt guilds (including WQG) within 50 miles of Westerville were checked for their annual dues amounts.

- Guild dues ranged from \$10.00 to \$30.00.
- The average (mean) was \$20.18.
- The mode (amount that appeared most often) was \$25.00.
- The median (or middle value) was \$20.00.

What does this mean for WQG? For many years, at \$12.00 per year, WQG's dues have been lower than most quilt guilds in the area. In the past few years, our expenses have increased due to renting the Legion for our meetings and our income has been primarily dues and the raffle baskets. The last major source of guild revenue was the 2012 quilt show.

So what is the next step for WQG? The 2014 Executive Committee established a policy that a dues increase would be considered when our *anticipated* account balance falls below \$2,500. The 2015 Executive Committee will continue to closely monitor the budget and this fall may make dues recommendations for the members' consideration.



2016 Program Brainstorming*

To generate 2016 program ideas, the Westerville Quilt Guild Executive Committee will hold a brainstorming session on Saturday, August 22 at 1:00 pm. The two hour session will be held at the Polaris Jo-Ann.

The brainstorming activity is open to any WQG member wanting to help create a 2016 topic/event survey. As a result of the ideas developed, a yearlong program of work may be developed.

If you are interested in serving on the 2016-17 Executive Committee (3 slots will be open), chairing a 2016 committee, or volunteering as a 2016 President of the Month, we hope you can attend. A signup sheet for the August 22 brainstorming session will be at the July Picnic meeting.

**A creativity technique to gather a list of ideas to solve a problem or reach a conclusion. Brain power is helped via hydration! So feel free to bring your own beverage.*

2015 Programs

August 25

Ruthie Hoover & Christina Sidebottom,
Presidents-of-the-Month
Rebecca Odom, Textile Curator, Ohio History
Connection

September 22

Shannon Bartlett and Lisa Smith, Presidents-of-
the-Month
AnneMarie Chany, *genxquilters*

October 27

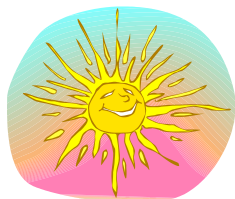
Susan Edwards, President-of-the-Month
Indian Hatchet Block

December 1

Pat Beeman, Jayne Godsey, DeeAnn Haworth, &
Vicki Melvin, Presidents-of-the-Month
Annual Holiday Meeting

Don't Forget!

Bring your 10th Anniversary Blocks
Bring your Mug Rug Challenge Pieces



Westerville Quilt Guild Sunshine Committee

If you know of a member who
is sick, has had surgery, or has
had a death in
the family, please contact **Christina Sidebottom**
who will send a card.
E-mail: o-side@att.net, telephone: 614-895-
9820 (home) / 614-208-2857 (cell).



Charm Squares 2015

A great way to expand your stash!

This year's themes are going to revolve around na-
ture and activities relating to that month.
Squares are 6 x 6 of quilt shop quality fabric.

July — *Our Great Nation* — Patriotic Prints

August — *Harvest* — Farms and Gardens

September — *Back to School* — Apples, Children

October — *Black Cats and Scary Bats!*

Leaves, Pumpkins, Turkeys, Oranges,
Browns and Reds.

November — *Days are getting shorter*
Metallic Prints/ Glittery/Shiny.

If you would like to participate this year, please
e-mail or text Abby Miller at:
gabriel83@columbus.rr.com or (614) 783-5470.

Check out Mimi Dietrich (among others) on



web site! She was inducted into the HOF on
July 18, 2015. It's a great place to visit.



**Mr. Frog Wants to
Remind You:
Wear Your Name Tags or
Pay the Penalty!**

Newsletter Information

Newsletter submissions should be sent as an attachment or typed in the body of an email to the following email address:
Newsletter@westervillequiltguild.com. The "publication" date for the Newsletter will be the 3rd Tuesday of the month. All
items submitted to the Newsletter need to be in by the 2nd Tuesday of the month. If you know of a member that does not
have access to email, please give them a copy of the newsletter.