



**Westerville Quilt Guild**

# NEWS

Volume 12, No 7 — July 2016

July 26th is  
Aunts & Uncles  
Day!  
If you have one, or  
more, give them a  
call!

**July 26, 2016**

**Annette Beachy & Amy Kormula,  
Presidents-of-the-Month**

## Fabric Bowls



Annette and Amy will be demonstrating how to create the fun, fabric bowls made with clothesline and fabric! So save your strip scraps and you can use them to create a fantastic, fun, fabric bowl!



## Announcing Fun with Fabric Committee's 2nd 2016 Challenge!!

The second challenge is a reversible table runner/topper to be displayed at the October 25th WQG meeting. At the July meeting, Nancy Ehounou will address the challenge.

You choose fabrics, design, and size. Make one that is a winter holiday on one side and reverses to your favorite sports team on the other. What about pretty summer flowers on the top with a different floral look on the reverse? Or for kids' parties maybe sweet birthday cupcakes on top with creepy crawly lizards on bottom? Be creative! Imagine the possibilities!



## Westerville Quilt Guild Quilt Sale

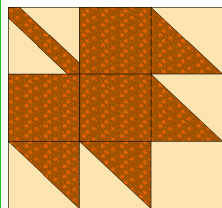
Saturday, October 15, 2016  
10:00 a.m. – 2:00 p.m.  
Heritage Condominiums Clubhouse,  
123 Lafayette Drive,  
Westerville, 43081  
(Southwest of the Cleveland Ave. and  
Main St. Intersection)  
Cash or Credit Card accepted; No  
checks, please.



## SOCIAL TIME - Meet and Greet - Arrive Early When You Can...

Start gathering around 6:30. Greet friends & MEET new members. **Members:** This month make sure you find someone you would like to know better, a new member or guest, and introduce yourself. **New Members/Guests:** If you are a new member/guest, approach someone you don't know and introduce yourself. Learn a little about the other person and share a bit about yourself! We are a friendly bunch!

We meet on the 4th Tuesday of each month, 6:30 pm Social Time, 7:00 p.m. Meeting, at The Westerville American Legion Hall, 393 East College Avenue, Westerville, OH 43081, Web Site: <http://www.WestervilleQuiltGuild.com>, E-mail: [info@westervillequiltguild.com](mailto:info@westervillequiltguild.com)



## Share A Square — Win a Bunch

### Maple Leaf 9 ½" Block - August Raf- fle

The maple leaf block is just in time for a fall quilt! Block instructions are attached to the July newsletter. The original source is <http://www.quiltaholics.com/bom/maplf.htm>.

9" Finished (9 ½" Unfinished)

- ◆ Prewash all fabrics.
- ◆ Background - Beige fabrics (print, tone-on-tone, batik, etc.)
- ◆ Main - Fall fabrics (print, tone-on-tone, batik, etc.; colors such as scarlet, purple, olive, brown, orange, red, and gold)
- ◆ Stem - Brown fabrics

Raffle - Submit as many maple leaf blocks as you want for the August drawing!



## Fat Quarter Raffle!

This month's theme is *Beach & Summer!* Bring your FQs in order to participate!



## WQG Rolling Library

Please remember that we are starting the Rolling Library. If you have any books, patterns, or magazines that you would like to donate, please bring them to the meeting and give them to DeeAnn Haworth, Marilyn Murray or Sue Meek.



## WQG Fair Volunteers

|                               |  |
|-------------------------------|--|
| Franklin County<br>July 16-23 | Jeff Bretthauer, Kathy Erickson, Jayne Godsey, Melissa Grawe, Karen Lesueur, Vicki Melvin, Christina Sidebottom, Becky Stains, and Barbara Vance |
| Ohio State<br>July 27 - Aug 7 | Becky Stains   |

- ◆ Pick a few sizes and cut leftovers as you finish projects
- ◆ Start sewing them together as starters
- ◆ Sort by color
- ◆ Use plastic boxes
- ◆ Buy a bigger house
- ◆ Don't buy or accept them
- ◆ Store where you can see what you have
- ◆ The more you cut, the more you have to manage.

Stay tuned for final survey results revealed in the August newsletter!



## Scrap Quilt Survey Revealed — Part 3 of 4

Bonnie Hunter ([www.quiltville.com](http://www.quiltville.com)) created a system to organize quilting scraps. She sorts strips (longer than 12") into sizes of 1.5", 2", and 2.5" and "bricks" of 2" X 3.5", 2.5" X 4.5", or larger. And, Bonnie organizes small squares (2", 2.5", and 3.5"). To tame your scraps and keep your fabric organized, check out the Quiltville website!

What words of wisdom regarding scrap management or storage did WQG members provide in the February survey?

- ◆ Cut squares into 1½", 2", and 2 ½" pieces
- ◆ Don't let scraps rule
- ◆ Gift them to charity

## 2016 Program Sneak Peek



### September 27, 2016

#### **Vicki Melvin and Barbara Vance, Presidents-of-the-Month**

##### **Scrap Quilts**

Members will jump on the scrap quilt carousel for demos by Becky Dickson, Jayne Godsey, Vicki Melvin, Gayle Seeman, and Barbara Vance. Scrap quilts will be on display.

### August 23, 2016

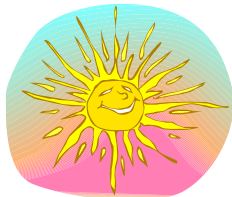
#### **Christina Sidebottom, President-of-the-Month**

##### **Aminah Robinson, Artist**



Tickets for the "Color My World: Blue" Raffle Basket will be on sale at the beginning of the meeting and during the meeting. The basket will contain fabrics, patterns,

and other assorted *Blue* themed treats. The drawing will be at the end of the meeting. Tickets are \$1 or 6 for \$5.



#### **Westerville Quilt Guild Sunshine Committee**

If you know of a member who is sick, has had surgery, or has had a death in

the family, please contact

**Christina Sidebottom** who will send a card.

E-mail: [o-side@att.net](mailto:o-side@att.net), telephone: 614-895-9820 (home) / 614-208-2857 (cell).

## **Westerville Quilt Guild Quilt Sale — October 15th**

We were overwhelmed with your generous donations at the June picnic! Keep those donations coming! Please consider making and donating at least one hand made item for our sale! Items will be collected through the September meeting. Please see Amy Korn or any committee member.

Flyers have been finalized and are available for distribution to area quilt shops and other organizations. Pick up some at the next meeting to share with friends, neighbors and other groups in the area.

We still need a few more bakers for the bake sale portion of our sale. If you would like to help, please contact Marilyn Lundquist ([marilyn.lundquist@gmail.com](mailto:marilyn.lundquist@gmail.com)) - or add your name to the sign-up sheet at the July guild meeting.



### **Holiday Party Planning**

Even though it's hotter than blazes, it's never too early to think about our Holiday Party, scheduled for Tuesday, November 29. Our theme this year will be "cookies" and we will have a special speaker focusing on favorite recipes from the 1950's. In addition, we would like to publish a little book (to be distributed at our party) of members' favorite cookie recipes. So please look through your recipe boxes and send a favorite recipe you would like to share. If possible, please e-mail the recipe to: [amyokorn@hotmail.com](mailto:amyokorn@hotmail.com) no later than October 1. It doesn't have to be a Christmas cookie recipe - just a family favorite.

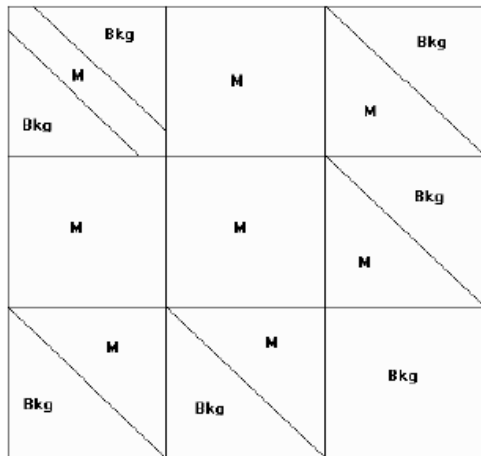
---

## Westerville Quilt Guild - August 2016

### Fun with Fabric "Share A Square and Win A Bunch" Block Raffle

Source: <http://www.quiltaholics.com/bom/maplf.htm>

#### Maple Leaf



9" Finished/9 1/2" Unfinished

Background (Bkg) – Beige (prewashed)  
(print, tone-on-tone, batik, etc.)

Main (M) – Fall Fabrics (prewashed)  
(print, tone-on-tone, batik, etc.; colors such as scarlet, purple, olive, brown, orange, red, and gold)

Stem (shown as M) – Brown (prewashed)

Raffle – Submit as many maple leaf blocks as you want for the August drawing!

#### Cutting Instructions:

1. Background: Two (2) 4" squares and one (1) 3 1/2" square
2. Main: Two (2) 4" squares; three (3) 3 1/2" squares
3. Stem: One (1) 4 1/2" beige square and one (1) 1"x7" brown strip

#### Sewing Instructions:

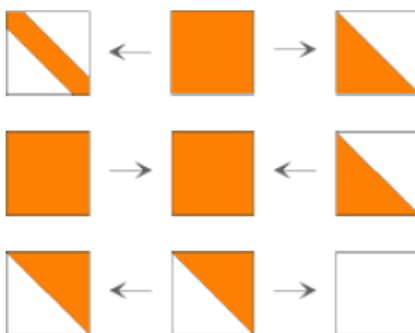
1. **Leaf Points** - To make the leaf points/half square triangles (HST), mark a diagonal line on both 4" beige background squares; place right sides together with the main fall fabric and stitch 1/4" on either side of diagonal mark; cut between stitching; press toward main fabric; square up to 3-1/2". Make 4.



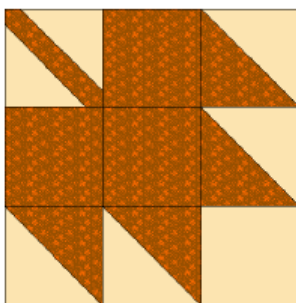
- 
2. **Stem** - Cut the 4 1/2" beige square in half on the diagonal; stitch the 1"x7" brown stem fabric between the two halves of the beige; press both seams toward stem; square up unit to 3 1/2".



3. **Rows** – Sew the three rows as follows. Press as arrows direct.



4. **Block** - Join the three rows to create the block. Press the two joining seams open.
5. **Size** - Please square up your finished block to be sure it is 9 1/2". If it is larger or smaller, check your seams and redo if necessary. If you do not check your measurements, your block may not join properly with other blocks easily to create a finished quilt.



This is what your block might look like (except the stem will be brown!).

---

## Newsletter Information

Newsletter submissions should be sent as an attachment or typed in the body of an email to the following email address: [Newsletter@westervillequiltguild.com](mailto:Newsletter@westervillequiltguild.com). The "publication" date for the Newsletter will be the 3rd Tuesday of the month. All items submitted to the Newsletter need to be in by the 2nd Tuesday of the month. If you know of a member that does not have access to email, please give them a copy of the newsletter. If you have any questions or suggestions, contact [Lisa Smith](#), WQG Newsletter Editor.

---