



Westerville Quilt Guild

NEWS

Volume 5, No 1 — January 2009

*Sow good services;
sweet remembrances will
grow from them.
~ Madame de Staël*

January 27, 2009, 7:00 p.m.

Connie Gelfer

President-of-the-Month

Trunk Show

Most of us know the speaker — it is Beth Schillig, creator of Beth's Creative Stitchery on High Street in Beechwold/Worthington. I asked her to share with us about her progress as a quilter over the past 3 years... Most of us know that Beth was "more-than-competent" as a garment constructor... but she was never known as "one of us" (say that with a smile). After her retirement from Beth's Creative Stitchery 3 years ago, she decided to learn the quilting side of textiles! She has developed her skills and will bring a show and tell of quilts to demonstrate her progress in the quilting world.

Hopefully, it will be inspirational as we all plan projects for the year... to help develop our own skills ... to take on a challenge ... to learn new techniques ... or we'll have fun just oooing and awing over the show and tell of the meeting.

Beth's
creative stitchery

WQG 2009 Retreat

We had such a fun time at the WQG 2008 retreat that we booked the OLC Retreat House again for 2009. The WQG 2009 Retreat has been booked for the weekend of Oct 2-4, 2009.

We checked the OSU schedule and the game is away in Indiana for that weekend. Also, plans are being made to offer a pre-retreat stay a few days prior to the retreat weekend, to sew and shop. Details and costs will follow after the first of the year.

Dates: October 2-4, 2009
Place: Our Lady of Consolation
 Retreat House
 315 Clay St
 Carey, OH 43316



2009 Meeting Dates

Jan 27 — Connie Gelfer
Feb 24 —
Mar 24 —
Apr 28 —
May 26 —
Jun 23 —
Jul 28 — Annual Guild Picnic
Aug 25 —
Sep 22 —
Oct 27 —
Nov 24 — Annual Guild Holiday Party
Dec 23 — No meeting

NOTE: If you signed up for a meeting and/or to be a greeter, please send an email to the [WQG newsletter](#) — the computer with the information on it died last week and we lost all the new information!



2009 Greeters

Greeters please plan on arriving early (by 6:30 pm) to set up the room if necessary and so you are there to meet and greet our members and any guests we might have.

Jan 27
Feb 24
Mar 24
Apr 28
May 26
Jun 23
Jul 28
Aug 25
Sep 22
Oct 27
Nov 24



President-of-the-Month Instructions:

If you are new to the WQG, here's some easy instructions for what to do when it's your turn to be *President-of-the-Month*. And, don't forget, you can get together with your friends and present a program together as *Presidents-of-the-Month* too!

1. Two weeks before your meeting date, email the meeting details to the WQG Newsletter editor (Lisa Smith) at the [WQG email address](#). You don't have to give an enormous amount of information—just the highlights. If the meeting will require the members to bring supplies to make something, a detailed supplies list should be sent along at least three weeks before the meeting so that those that don't have email will get it in time to know what to bring!
2. Go to the [WQG Web site](#) and find the Meeting Agenda examples and come up with as detailed an agenda as you would like. Mostly these are to let you know the order of "business" that we follow at the meetings. If you've been to several meetings already, you'll know that the format is not written in stone — and you can rearrange the parts to suit your program!
3. Come to the meeting, preside as *President-of-the-Month*, and have fun! We always do!

Westerville Quilt Guild 2009 Committees and Budgeted Amounts

In some cases, budgets listed are working budgets and more money is available if needed. If you are the chair of a committee, please contact our Treasurer, Rose Wetherill for instructions on when and how to access funds.

Workshop Committee (\$50)

Plans, schedules and organizes learning workshops for Guild members.

Chair:

Members:

Sunshine Committee (\$20)

Sends cards and/or flowers when necessary to guild members, and thank you notes to guest speakers.

Chair:

Members:

Service Project Committee (\$50)

Leads the guild in efforts to make and present quilts to charities.

Chair:

Members:

Fun With Fabric Committee (no budget)

Plans and implements a block exchange, round robin or challenge for guild members.

Chair:

Members:

Scrapbook/Historian Committee (\$100)

Prepares an ongoing scrapbook of guild events.

Chair: Rose Wetherill

Members:

Special Events Committee (\$150)

Plans a Shop Hop Tour, a Weekend Retreat, or other events such as National Quilting Day.

Chair:

Members:

Quilt Show/Festival Committee (\$200)

Makes suggestions and plans for participation in special festival events and/or plans for a guild quilt show.

Chair:

Members:

Publicity Committee (\$10)

Promotes public awareness of guild activities in media formats.

Chair:

Members:

Awards/Recognition Committee (\$20)

Attends all meetings and awards pins for show and tell and also arranges any other special recognition such as presenting guild pins to guest speakers.

Chair:

Members:

July Guild Picnic Committee (\$100)

Plans events and makes arrangements for the annual guild picnic.

Chair:

Members:

November Holiday Party Committee (\$150)

Plans events and makes arrangements for annual Holiday Party.

Chair:

Members:

(Continued on page 4)



Westerville Quilt Guild

We meet on the 4th Tuesday of each month, 7:00 p.m. at The City of Westerville Electric Division Building, 139 E Broadway, Westerville, OH 43081, Web Site: <http://WestervilleQuiltGuild.smith1028.com>, E-mail: WestervilleQG@smith1028.com

Westerville Quilt Guild is a "member run" group. Member volunteers serve as "President-of-the-Month" and present the program for that month's meeting. Our dues are \$12 a year.

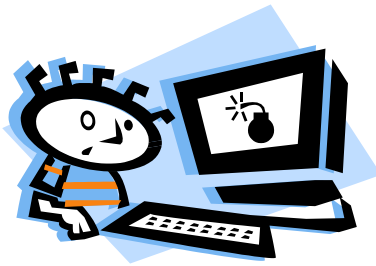
WQG Executive Committee Meeting

The new 2009 Executive Committee will meet on January 27 at 6:30 before the regular meeting at the Electric Company.



Mr. Frog Report

The current total balance in the "Frog" bank is \$6.75!



The Blue Screen of Death

The old laptop that we've been using for guild items has ex-

perienced "the blue screen of death" — meaning the hard drive has crashed and we cannot access any of the wonderful information we just entered into it — including all of the sign-ups for the 2009 meetings, greeters, and committees! So, if you remember what you signed up for at the November meeting we'll be passing around another sign-up sheet at the January and February meetings. Thanks for your help!

(Continued from page 3)

Membership Committee (\$15)

Maintains a current record of guild members and coordinates e-mail announcements.

Chair: Judy Thiel

Members:

Newsletter/Web Site Committee (\$150)

Prepares a monthly newsletter and maintains guild web presence.

Chair: Lisa Smith

Members: Shannon Bartlett, Karen Lesueur

President of the Month (\$225) - \$25 per month

Keeper of the Westerville Guild Quilt

Executive Committee:

Shannon Bartlett (2008-2009)

Jessica Hollins (2008-2009)

Karen Lesueur (2008-2009)

Ruthie Hoover (2009-2010)

Julie Lochard (2009-2010)

Rose Wetherill, Treasurer



Newsletter Information

If you would like to submit an article or "tip" to the newsletter, please send it, either as an attachment or type the text in your email, and send it to me at:

WestervilleQG@smith1028.com

The "publication" date for the Newsletter will be the 3rd Tuesday of the month. All items submitted to the

Newsletter need to be in by the 2nd Tuesday of the month. If you know of a member that does not have access to email, please give them a copy of the newsletter.