



Westerville Quilt Guild

NEWS

Volume 5, No 5 — May 2009

You know you're a quilter when...your GPS is programmed for every quilt shop within a 3-state range.

May 26, 2009, 7:00 p.m.

Jessica Hollins

President-of-the-Month

Diane Reed of The Woolen Willow

Need a baby, teacher or family quilt done in a hurry? Looking for a table runner to decorate right before a holiday season? Or would you like to show up to a friends' house with a wonderful housewarming gift? No Need to Fear!!! "Pellon on Point Quilting" is here!!! Join Diane Reed from [The Woolen Willow Quilt Shop](#) in Williamstown, West Virginia to teach us this wonderful technique which will help us not only be able to accomplish more in a short amount of time but also use up LOTS of scraps and squares!! She will also have demonstrations with wool felting and rug hooking! The Woolen Willow will have quilt kits and supplies available to purchase that night on all that you will see! Come join the fun and don't forget to stop early to get your coffee, hot chocolate or tea available from Tim Horton's that will stay open just for us!!



LOOK Our New Meeting Place



The Westerville Medical Campus of OhioHealth is the new location for our meetings! It is a brand new building and has plenty of parking, is conveniently located on the corner of Africa Rd and Polaris Pkwy. The meeting rooms are to the left after you enter through the main entrance.

The Westerville Medical Campus of OhioHealth is the new location for our meetings! It is a brand new building and has plenty of parking, is conveniently located on the corner of Africa Rd and Polaris Pkwy. The meeting rooms are to the left after you enter through the main entrance.



300 Polaris Parkway
Westerville, OH 43082

*Don't forget to pay your Membership Dues—if you want to continue to get the newsletter!
And wear your name badge or pay Mr. Frog!*

Announcements:

Local guild QQ is hosting a workshop this November, see page 4 for details.



June 18-20 — The 40th Annual NQA Quilt Show at the Columbus Convention Center!



2009 Meeting Dates

Jun 23 — UFO - Mini Retreat Night
Jul 28 — Annual Guild Picnic
Aug 25 — Jennifer McCann
Sep 22 — TBA
Oct 27 — Becky Dickson — "Off Our Blocks" art quilting group
Nov 24 — Annual Guild Holiday Party
Dec 23 — No meeting

2009 Charm Square Club

Rules:

1. Use only quilt shop fabrics, washed and pressed, cut in 6-inch squares.
2. Place one square for each person, including yourself, in a baggie marked with your name.
3. Bring your charm squares each month to the guild meeting or send with a friend; you'll take home your new squares at the end of the evening.
4. We will begin in April and do both March and April's squares.
5. Call or email Becky Stains if you have problems or questions. 865-1190, johnssta@aol.com.

Mar - Green

Jul - Patriotic

Apr - Pastels

Aug - "It's Hot"

May - 1930s or 1940s prints in honor of Mothers everywhere

Sep - "Back to School" in honor of teachers everywhere

Jun - Something manly in honor of Dads everywhere

Oct - Sports

Nov - Happy Holiday!



Group A:

Judy Thiel Becky Stains
Barb Horlocker Rose Wetherel
Connie Gelfer Ginny Littleton
Karen Lesueur Cindy Warton

Group B:

Corinne Vititoe Karen Gulley
Ruth Ann Leavell Jayne Godsey
Julie Lockard Sherry French
Marilyn Murray



Westerville Quilt Guild

We meet on the 4th Tuesday of each month, 7:00 p.m. at The Westerville Medical Campus of OhioHealth, 300 Polaris Pkwy, Westerville, OH 43082, Web Site: <http://www.WestervilleQuiltGuild.com>, E-mail: info@westervillequiltguild.com

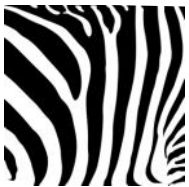
Westerville Quilt Guild is a "member run" group. Member volunteers serve as "President-of-the-Month" and present the program for that month's meeting. Our dues are \$12 a year.

SAVE YOUR SCRAPS

Karen Lesueur is working on a mini charm quilt and needs your help. Any scraps of quilt fabric at least 1½" square would be gratefully accepted!

Found:

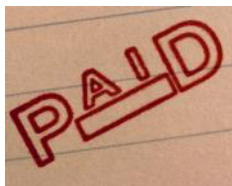
Folder with magazine clippings, fat quarter, etc. at last November's meeting. Contact [Jayne Godsey](#) for info.



Fun With Fabric

Don't forget about our two colored quilt challenge. Make a quilt with just two colors and bring it to show and tell. We have special pins for those who do! This is a year long challenge, so you have plenty of time ☺

2009 Membership Dues



If you have not paid your 2009 membership dues of \$12. Please bring them along to the May meeting.

Quilter's Green Tips



Sent in by Shannon Bartlett:



Pat, who works at the Jo-Anns in Polaris uses old gift cards to create jewelry and other embellishments. These cards come in many fun designs these days, just glue two of them back-to-back and cut out different shapes; punch a hole to add jump rings for jewelry or to sew on as embellishments!

So - when you've used the card up - cut it up for embellishments!

Photo by Kathy of Midway, KY. Retrieved 5/18/2009 from <http://experiencecreativity.blogspot.com/2008/07/recycled-gift-card-jewelry.html>.



Each month we'd like to publish a "green" tip to help us save our planet & our money too! In this tough economy, we can use all the help we can get to save money one way in our quilting so we can buy more fabric or take that new class or to pay for that fun retreat!

Summer Fun is Coming!

WQG's Annual Picnic - July
The Quilt-Spree Central Ohio - July

Newsletter Information

If you would like to submit an article or "tip" to the newsletter, please send it, either as an attachment or type the text in your email, and send it to me at:

Newsletter@westervillequiltguild.com

The "publication" date for the Newsletter will be the 3rd Tuesday of the month. All items submitted to the

Newsletter need to be in by the 2nd Tuesday of the month. If you know of a member that does not have access to email, please give them a copy of the newsletter.



JUDITH BAKER MONTANO CLASSES

NOVEMBER 13 & 14, 2009

Location: The Stitching Post, 885 Bethel Rd
(Rt.315, Olentangy Plaza)

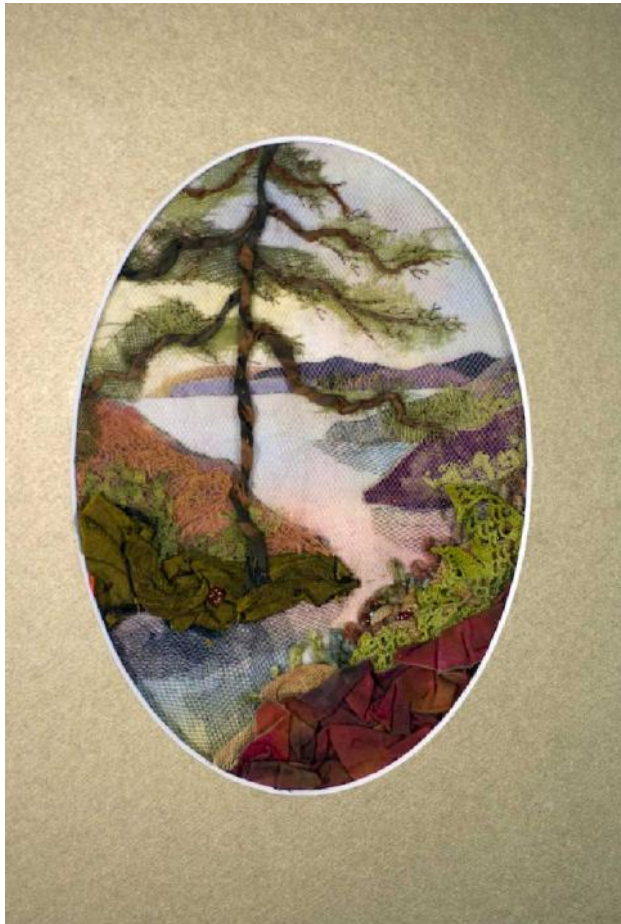
Time: 9am to 4pm (one hour lunch break, many restaurants in walking distance)



VICTORIAN CHRISTMAS STOCKING- FRIDAY

Make a treasured heirloom with Victorian crazy quilting, embroidery, and embellishments. The Christmas stocking is a generous size and can be well underway in a day. Machine crazy quilting in the morning ... the afternoon is devoted to embellishment and assembly. Page 95 *Crazy Quilt Odyssey*; Page 59 *Crazy Quilt Handbook*. Please refer to her website for supplies needed.

www.judithbakermontano.com.



LANDSCAPE PAINTING - SATURDAY

Create an unusual fabric picture using exotic fabrics and Victorian stitches.

This is an original art form used by Judith to create one-of-a-kind pictures. Can be beaded and embellished for extra detail. (Keep it small ... 8" x 10" is good). Page 96, *Crazy Quilt Odyssey*, Page 74 & 76 of *Art and Inspirations*. Please refer to her website for supplies needed.

\$60/per class for members, \$70/non-members.

Please send check to: Madeline Hansen, 9140 Muirkirk Dr, Dublin, OH 43017 (614-932-0210)

madelinehansen@peoplepc.com

All are invited to join us for dinner with Judith on Saturday after class at Hunan Lion, 2038 Bethel Rd.