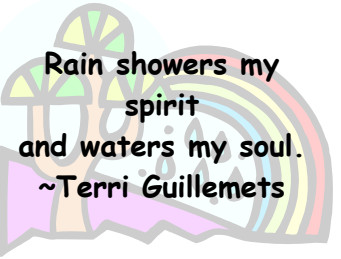




**Westerville Quilt Guild**

# NEWS

Volume 6, No 7 — July 2010



**July 27, 2010**

## **Sherry French, Debi Balog, Judy Theil President's-of-the-Month WQG Members Annual Summer Picnic**



This year the picnic will be held at McNamara Park. The park is located behind the police and fire stations at 7049 Big Walnut Rd, Galena, OH 43021. (See map on page 4.) We were there a few years ago. Please bring a dish to share and a serving piece. The guild will provide Honey-baked ham, rolls, mayo and mustard, plates, drinks, & utensils. There is a place for you to plug in your hot dishes if you wish.

Remember to bring your newest show and tell project or a RED, WHITE and BLUE project.

Questions email: [sfrench7713@wowway.com](mailto:sfrench7713@wowway.com), [theil03@gmail.com](mailto:theil03@gmail.com), or [marigoldDAB@aol.com](mailto:marigoldDAB@aol.com)

## **Helping Others Help Themselves**

[The Sewing Machine Project](#) was formed in 2005 for the purpose of collecting donated new and used sewing machines to distribute to individuals and groups in communities that have suffered from natural disasters. They call this "mending communities." The Project supports the recipients with sewing and small business education, opening new opportunities for small business development, creative growth and community service. Since 2005 they have distributed over 650 sewing machines, helping people become self-sustaining through sewing. They have worked extensively in the Gulf Coast region, and in Mexico, Kosovo and Sri Lanka, helping people in those areas to start small collectives and improve their lives through the art of sewing. The mission of the Sewing Machine Project is to give people a tool that will not only help them mend their own lives but also will give them a way to take an active role in the rebuilding of their community. People grow strong and their community grows strong as well. For information on donating machines, sewing supplies, or making a financial donation, go to the [Sewing Machine Project Giving](#) page.



*Submitted by Susan Edwards*

---

## 2010 Committees\*

### Workshop Committee (\$800)

Plans, schedules and organizes learning workshops for Guild members.

Chair: Trish Bishop

### Sunshine Committee (\$20)

Sends cards and/or flowers when necessary to guild members, and thank you notes to guest speakers.

Chair: Rose Wetherill

### Service Project Committee (\$50)

Leads the guild in efforts to make and present quilts to charities.

Chair: Becky Dickson

Members: Aggie Peterson

### Fun With Fabric Committee (no budget)

Plans and implements a block exchange, round robin or challenge for guild members.

Chair: Julie Lockard

Members: Jeff Bretthauer, Becky Stains

### Special Events Committee (\$150)

Plans a Weekend Retreat or other events such as National Quilting Day.

Chair: Becky Stains

Members: Jayne Godsey, Pat Beeman

### Quilt Show Committee

Makes suggestions and plans for participation in special festival events and/or plans for a guild quilt show.

Chair:

Members: Barb Horlocker, Susan Edwards

### Publicity Committee (\$10)

Promotes public awareness of guild activities in media formats.

Chair:

Members:

### Awards/Recognition Committee (\$20)

Attends all meetings and awards pins for show and tell and also arranges any other special recognition such as presenting guild pins to guest speakers.

Chair: Debi Balog

### July Guild Picnic Committee (\$125)

Plans events and makes arrangements for the annual guild picnic.

Chair: Judy Theil

Members: Debi Blalog, Sherry French

### November Holiday Party Committee (\$175)

Plans events and makes arrangements for annual Holiday Party.

Chair: Lisa Smith

Members: Julie Lockard, Karen Lesuer

### Membership Committee (\$15)

Maintains a current record of guild members and coordinates e-mail announcements.

Chair: Judy Theil

### Newsletter/Web Site Committee (\$100)

Prepares a monthly newsletter and maintains guild web presence.

Chair: Lisa Smith

Members: Shannon Bartlett, Karen Lesueur

President of the Month (\$225) - \$25 per month for 9 meetings (non-party meetings)

Keeper of the Westerville Guild Quilt

Charm Square Monthly

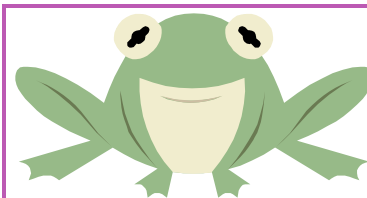
Beck Stains, Jessica Hollins, Susan Edwards

*\*Please give any corrections/omissions to [Lisa Smith](#) so the list can be updated.*



"One Quilter's Journey" with Carol Doak, August 24 at 7pm at The Young-Budd American Legion Post in Westerville, 393 E. College Street. \$5 admission at the door.

Free for WQG Members (wear your badge!)



**Mr. Frog  
Wants to  
Remind You:**

**Wear Your Name Tags or Pay the  
Penalty!**



## Westerville Quilt Guild

We meet on the 4th Tuesday of each month, 7:00 p.m. at The Westerville Medical Campus of OhioHealth, 300 Polaris Pkwy, Westerville, OH 43082, Web Site: <http://www.WestervilleQuiltGuild.com>,

E-mail: [info@westervillequiltguild.com](mailto:info@westervillequiltguild.com)

Westerville Quilt Guild is a "member run" group. Member volunteers serve as "President-of-the-Month" and present the program for that month's meeting. Our dues are \$12 a year.

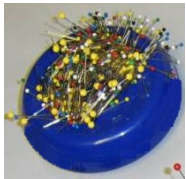
## 2010 Meeting Dates

- July 27 - Trish Bishop, Debi Balog, &  
Sherry French  
Annual Guild Picnic
- August 24 - Trish Bishop  
Carol Doak
- September 28 - Amy Korn & "Friends"  
"TBD"
- October 26 - Joan Lally, Shannon Bartlett,  
Lisa Smith  
"Where the Magic Happens"
- November 23 - Lisa Smith, Julie Lockard  
Annual Guild Holiday Party

## 2010 Greeters

- July 27 Picnic
- August 24 Jeff Bretthauer &  
Karen Gulley
- September 28 Rose Wetherill &  
Lynda Davidson
- October 26 Sherry French &  
Norma Brownfield
- November 23 Jayne Godsey &  
Becky Dickson

Arrive at 6:30. Greet people at main door.  
Accompany new people to the meeting room.



Storing your scissors near a magnetic pincushion can cause them to become magnetized, which can damage your sewing machine's computer. To demagnetize them, rub a magnet on the blades several times (not too fast) in different directions. This will disrupt the magnetic alignment within the scissors.



If you haven't heard yet, Jennifer Chiaverini (the author of the Elm Creek book series) is teaming up with Project Linus to offer Elm Creek Readers the chance to decide whether Sarah's twins will be boys, girls or one of each by making a Twin Star block — or more than one and mailing it to her by Labor Day, Sept. 6, 2010. You're encouraged to 'stuff the ballot box', and you can actually influence the characters in her novel! All the blocks will be donated to Project Linus. The information and pattern are available on her website <http://elmcreek.net/index.php/gallery/patterns-detail/twin-star/> The results will be revealed at Project Linus Institute on Friday July 22, 2011.

## Executive Committee Members

- [Connie Gelfer](#) (2010-2012)  
[Irene Habowski](#) (2010-2012)  
[Marilyn Murray](#) (2010-2012)  
[Marsha Young](#) (2010-2012)  
[Julie Lockard](#) (2009-2011)  
[Ruthie Hoover](#) (2009-2011)  
[Trish Bishop](#), Treasurer

## Newsletter Information

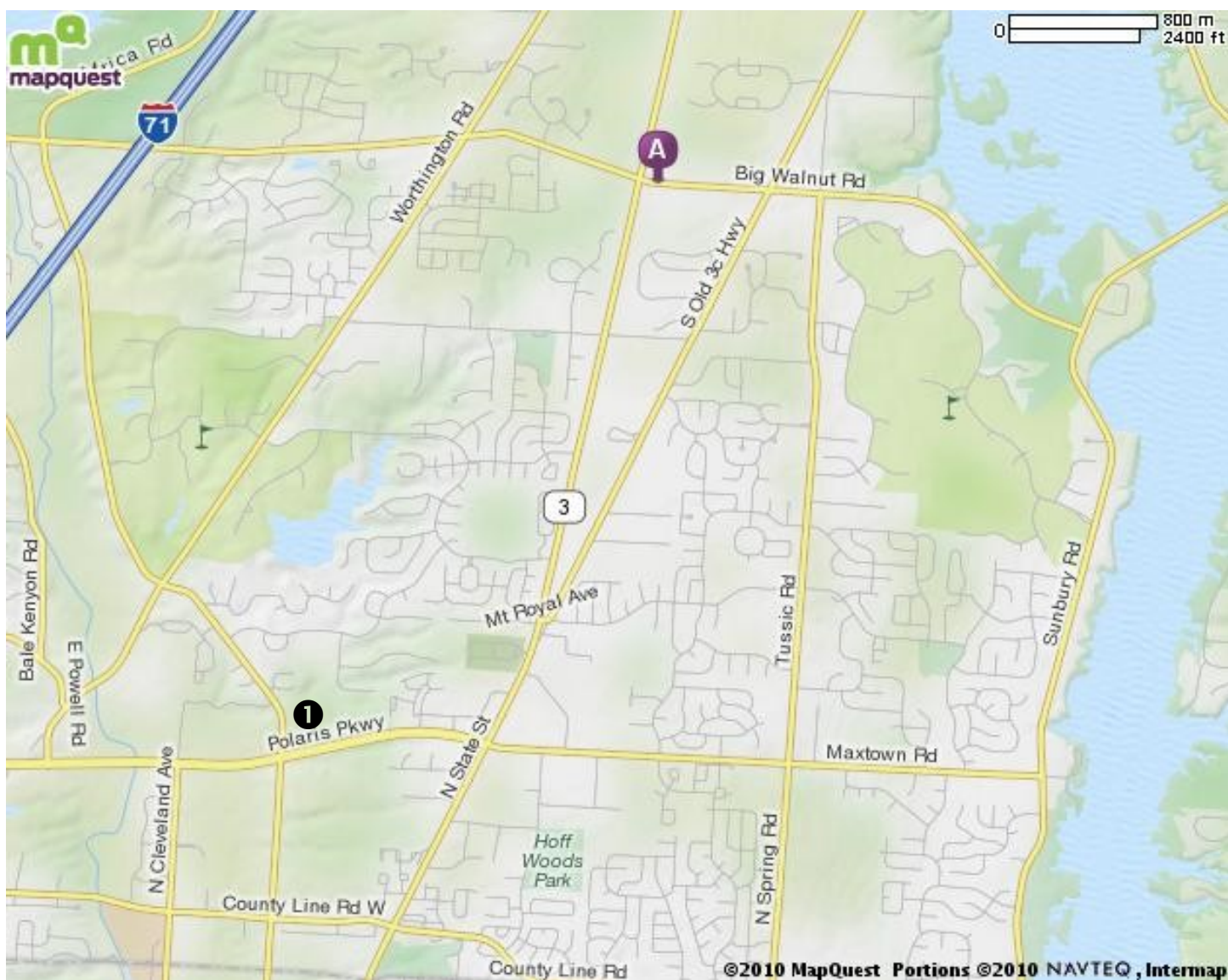
If you would like to submit an article or "tip" to the newsletter, please send it, either as an attachment or type the text in your email, and send it to me at:

[Newsletter@westervillequiltguild.com](mailto:Newsletter@westervillequiltguild.com)

The "publication" date for the Newsletter will be the 3rd Tuesday of the month. All items submitted to the

Newsletter need to be in by the 2nd Tuesday of the month. If you know of a member that does not have access to email, please give them a copy of the newsletter.

Map of McNamara Park, 7049 Big Walnut Rd, Galena, OH 43021 (A on map, OhioHealth Medical Center location is marked 1 on map.)



May 29 – September 5, 2010  
The Dairy Barn Arts Center  
Athens, Ohio

*Quilting  
Traditions:  
The Art of the  
Amish*

Over 60 antique quilts  
from the private collection of  
Tom and Marsha French

Gallery Shop  
Docent tours on request

Tuesday – Friday 11-5 PM  
Thursday 11-8 PM  
Saturday and Sunday 12-5 PM  
ADMISSION: \$6.00 General;  
\$5.00 Student/Senior  
Members and Children under 12 Free

Handicap accessible, free parking, tours and buses welcome

Visit [www.dairybam.org](http://www.dairybam.org)  
for additional information

Dairy Barn Cultural Arts Center  
8000 Dairy Lane, Athens, Ohio

Contact: Kathleen Dawson, Quilt National Director  
740-592-4961 [qn@dairybam.org](mailto:qn@dairybam.org)